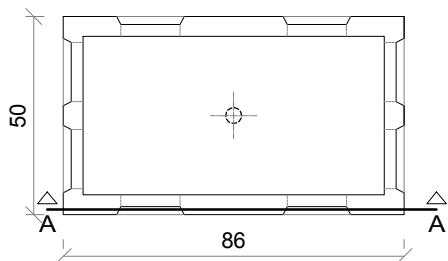
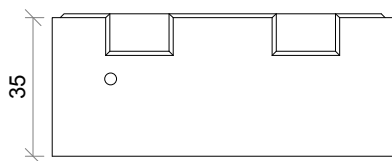


Dimensions in centimetres.

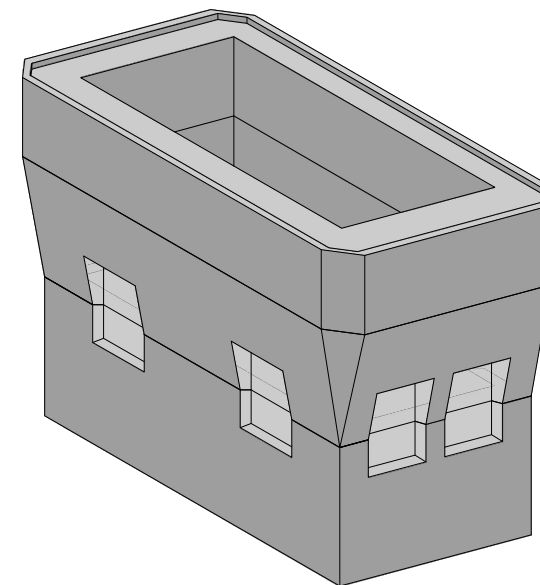
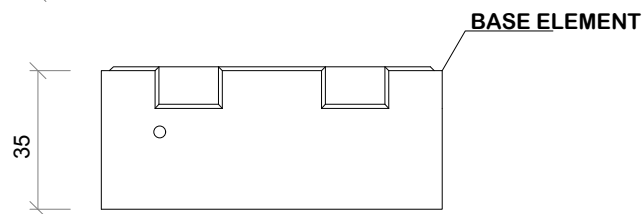
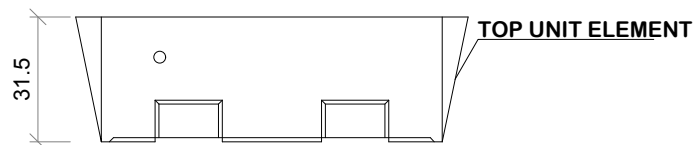
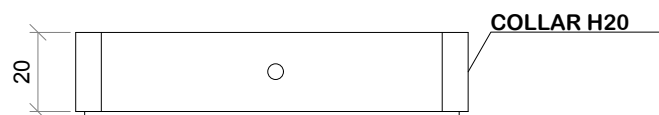
PLAN



SECTION A-A



TYPICAL COMPOSITION



TECHNICAL DATA SHEET

CONCRETE STRENGTH :	C 32/40
CEMENT:	CEM 42.5 R
W/C RATIO max :	0.55
PRODUCTION TECHNOLOGY:	VIBRATION
BASE ELEMENT WEIGHT:	147 Kg
TOP ELEMENT WEIGHT:	130 Kg
COLLAR H20 WEIGHT :	122 Kg
LINEAR TOLERANCE	± 3%
THICKNESS TOLERANCE	± 5%