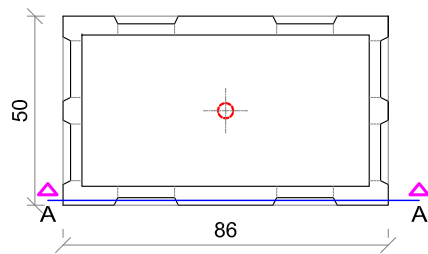
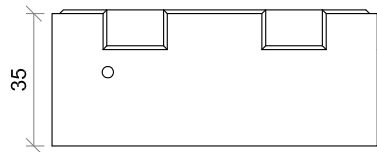


Le dimensioni sono espresse in cm.

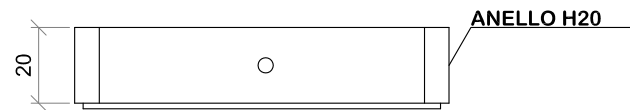
PIANTA



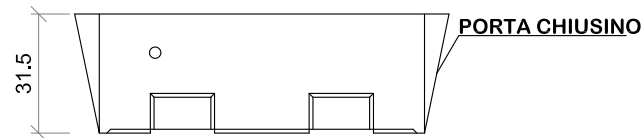
SEZIONE A-A



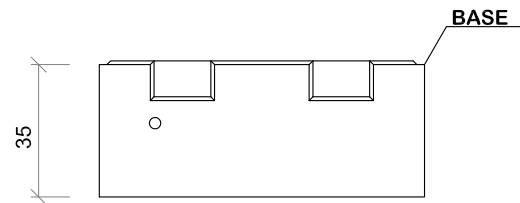
COMPOSIZIONE TIPO



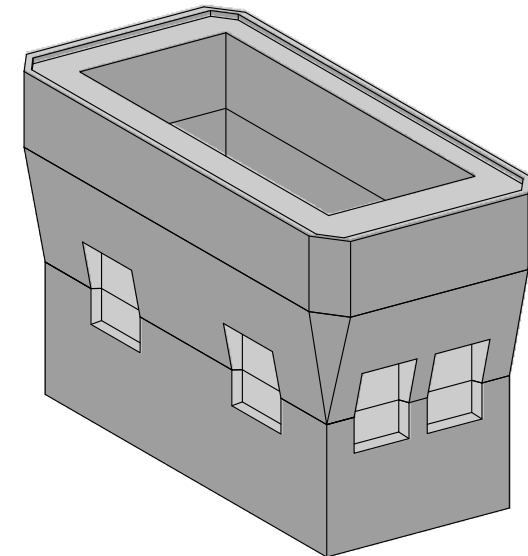
ANELLO H20



PORTA CHIUSINO



BASE



SCHEDA TECNICA

RESISTENZA DEL CLS :	C 32/40
CEMENTO IMPIEGATO :	CEM 42.5 R
RAPPORTO A/C max :	0.55
TECNOLOGIA DI PRODUZIONE:	VIBROCOMPRESSIONE
PESO POZZETTO BASE :	147 Kg
PESO PORTA CHIUSINO :	130 Kg
PESO H20 :	122 Kg
TOLLERANZA SULLE DIMENSIONI LINEARI \pm 3%	
TOLLERANZA SUGLI SPESSORI \pm 5%	