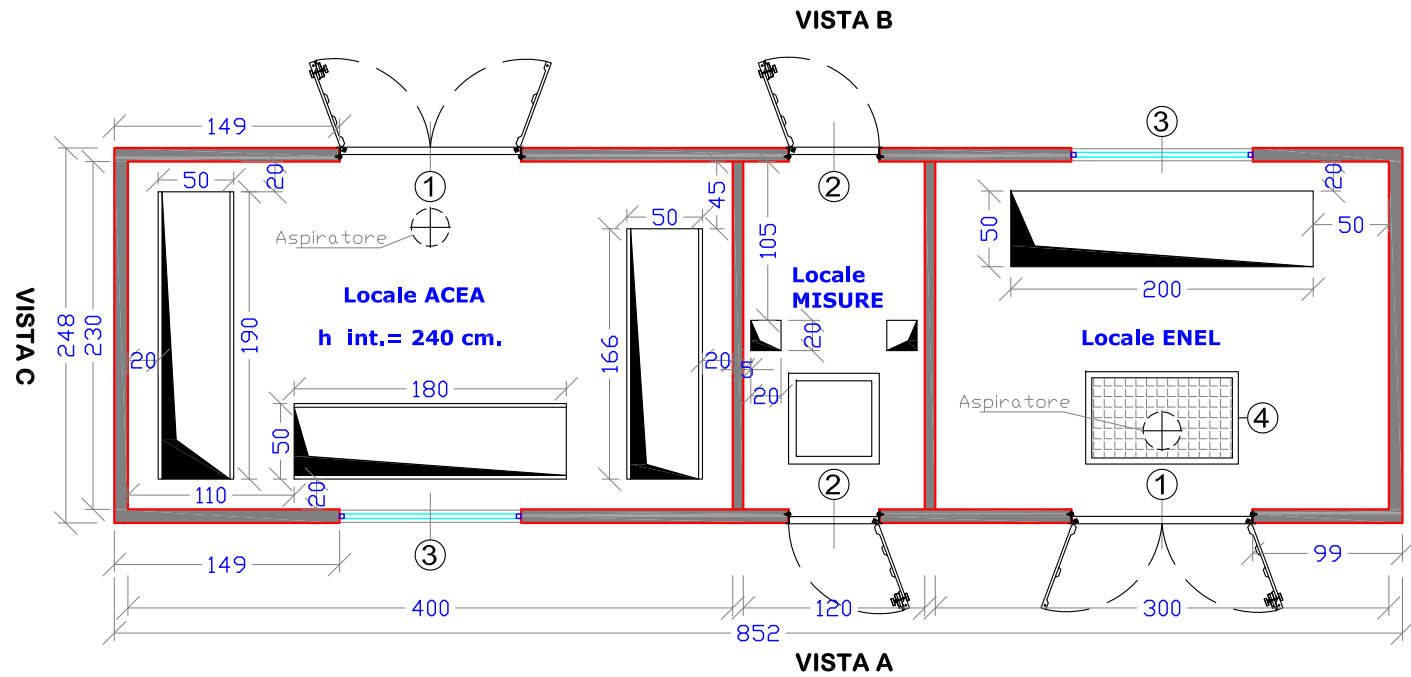


CABINA PREFABBRICATA IN C.A.V.
CABINA BOX m. 8.52 (lunghezza) x 2.48 (larghezza) x 2.60 (altezza)
PIANTA E PROSPETTI

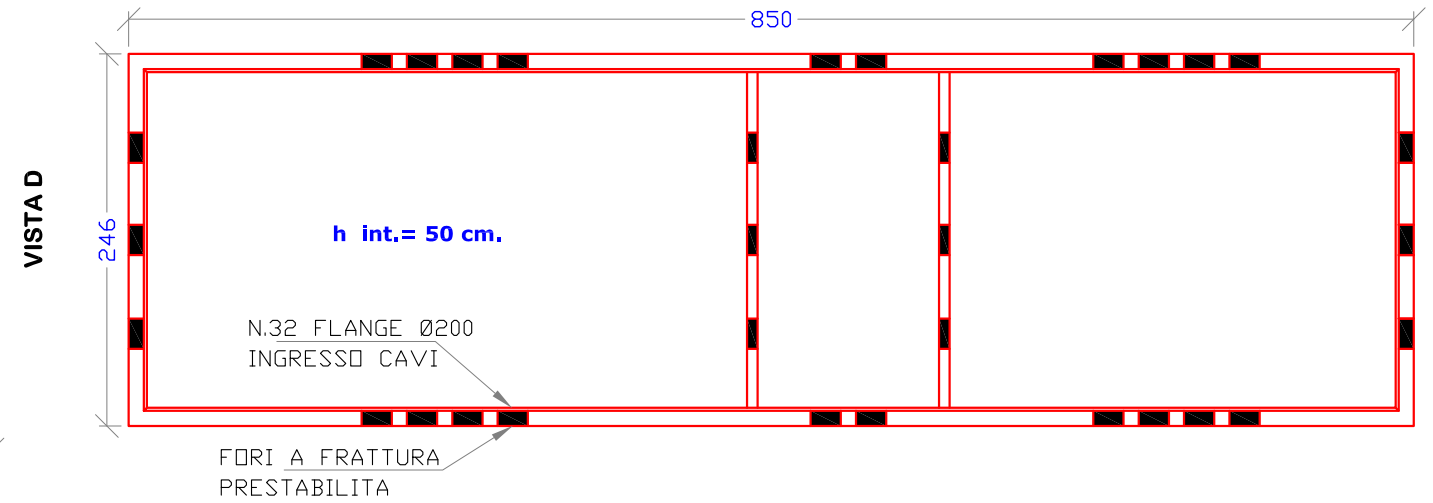
Scala disegno 1:50

MATERIALI:
calcestruzzo C25/30
acciaio B450C

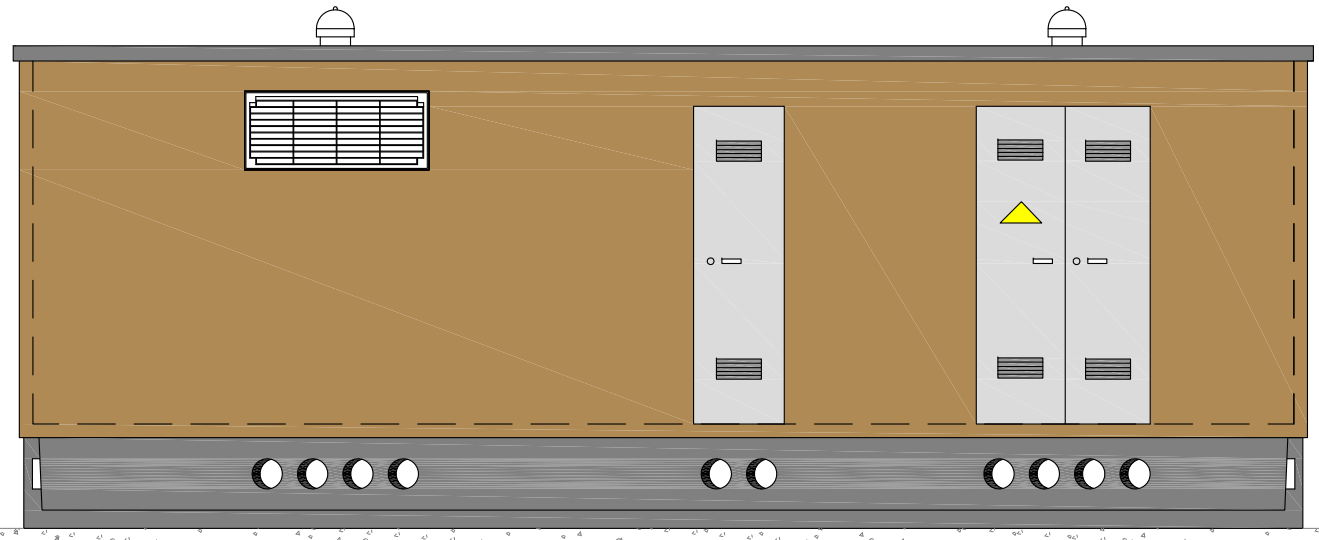
PIANTA CABINA



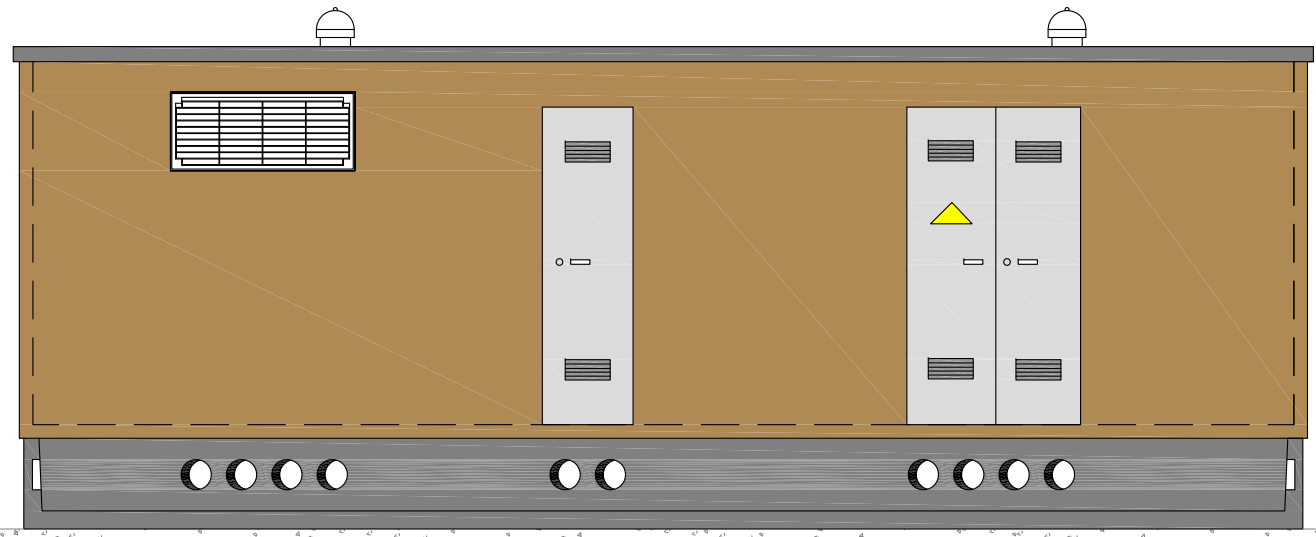
PIANTA VASCA DI FONDAZIONE



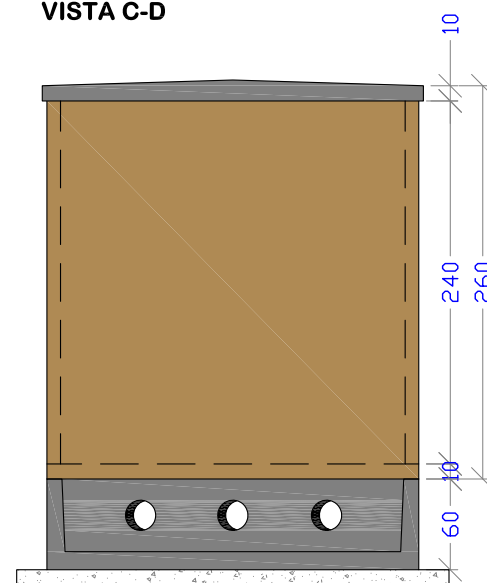
VISTA A



VISTA B



VISTA C-D



LETTO DI MAGRONE H= 10 cm.
LIVELLATO ALL'ESTRADOSSO
DA REALIZZARE A CURA DEL COMMITTENTE

LEGENDA:

- ① PORTA A DUE ANTE in VTR o in acciaio (CM. 120X H215) omologata ENEL
- ② PORTA AD UNA ANTA in VTR (CM. 60X H215) omologata ENEL
- ③ GRIGLIA ALTA in VTR (CM. 120X H50) omologata ENEL
- ④ PLOTTA DI COP. CM. 100X60